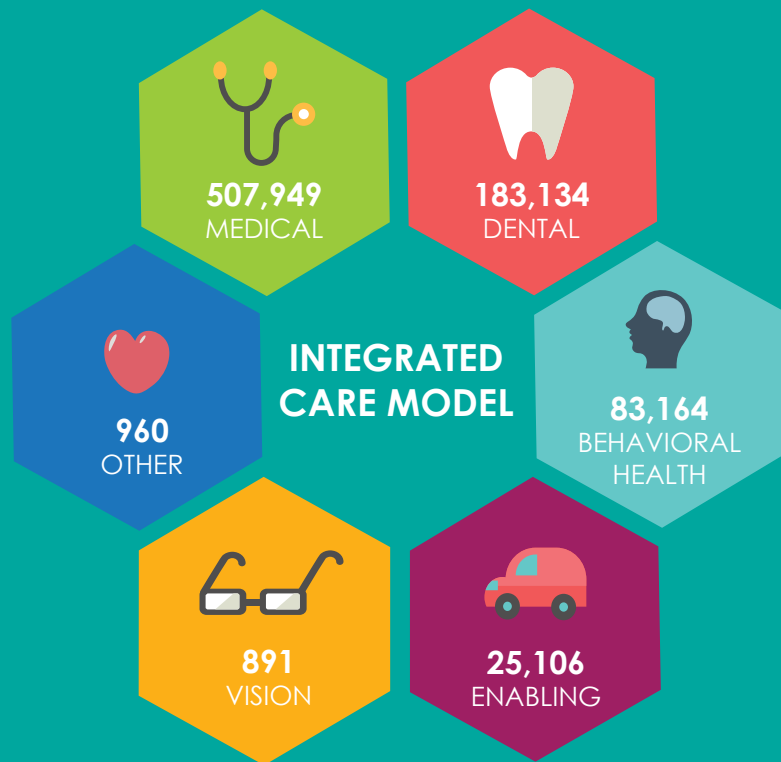




IOWA'S COMMUNITY HEALTH CENTERS

Community health centers provide primary medical, behavioral health, dental and pharmacy services at 48 full-service sites and an additional 38 sites that include schools, nursing homes, homeless shelters, and other locations where special populations are served. In total, Iowans can access healthcare services at 86 sites statewide.

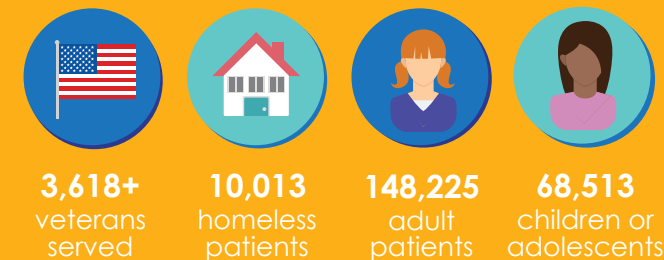
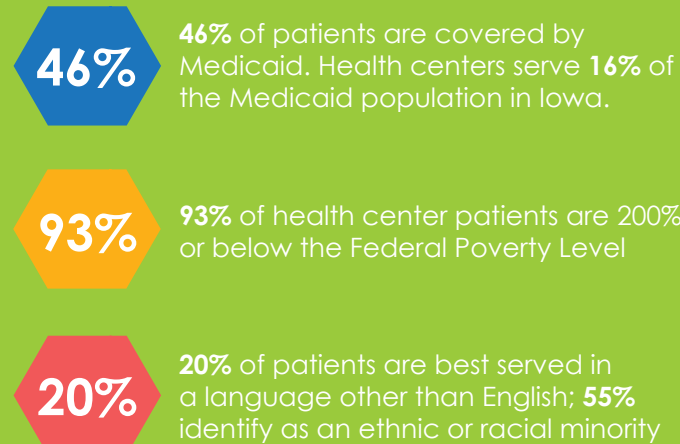
OUR SERVICES



Enabling Services: Reducing Barriers

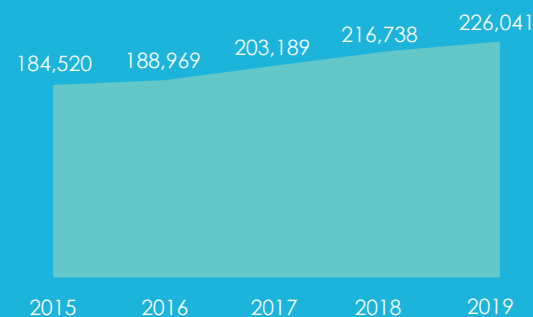
- Outreach
- Transportation
- Interpretation
- Housing
- Case Management
- Health Education
- Eligibility Assistance
- Food Insecurity

OUR PATIENTS

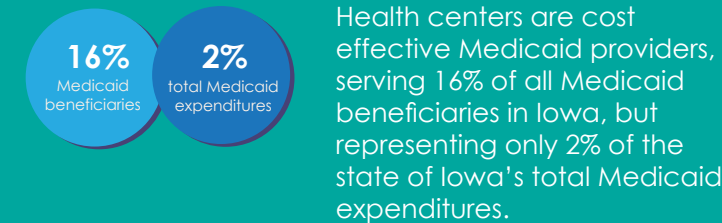
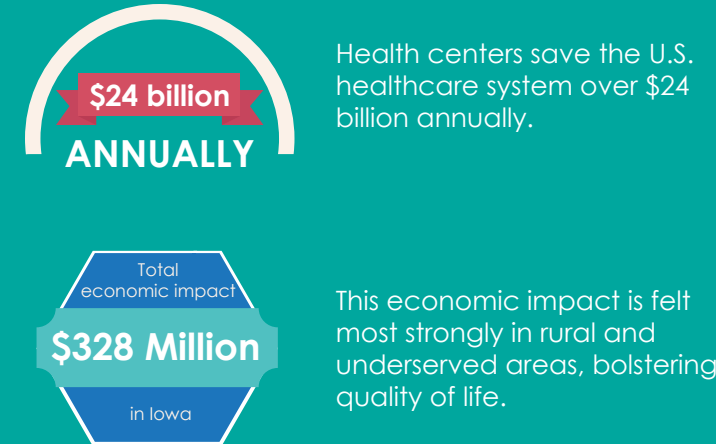


PATIENT TRENDS

Patients Served 2015-2019

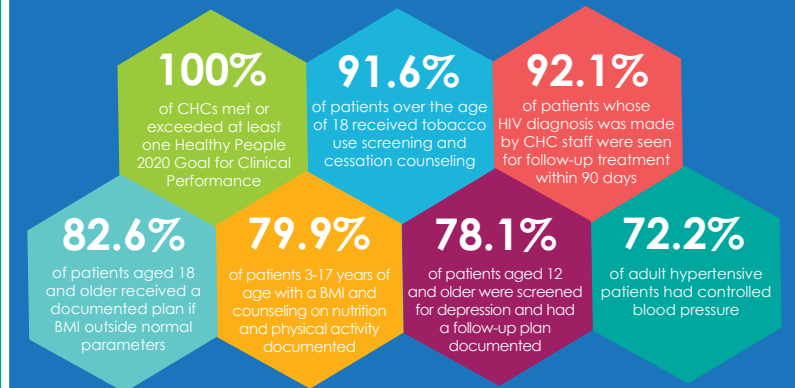


ECONOMIC IMPACT



QUALITY OUTCOMES

Iowa's health centers exceed our national peers in a variety of quality metrics including:



BEHAVIORAL HEALTH TRENDS

Patients Served 2015-2019

