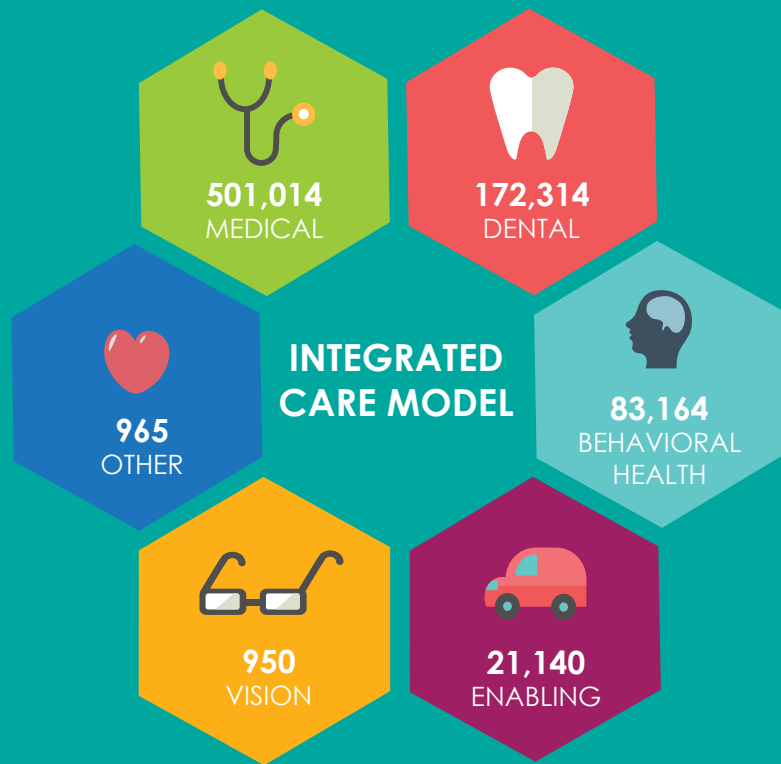




# IOWA'S COMMUNITY HEALTH CENTERS

Community health centers provide primary medical, behavioral health, and dental services at 44 full-service sites and an additional 40 sites that include schools, nursing homes, homeless shelters, and other locations where special populations are served. In total, Iowans can access healthcare services at 84 sites statewide.

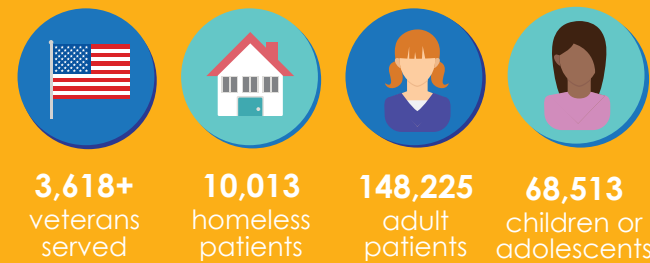
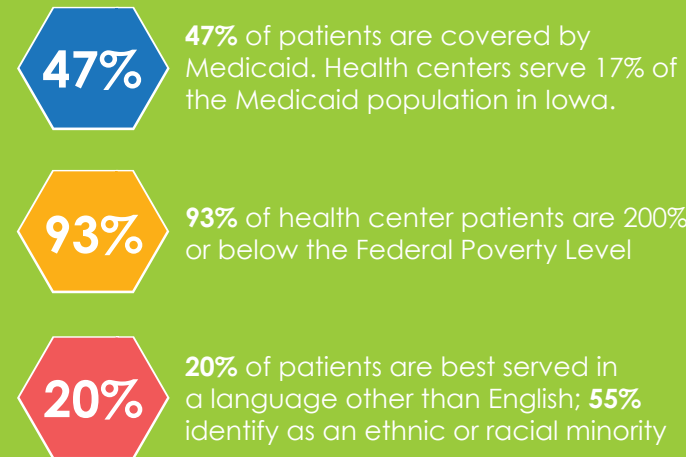
## OUR SERVICES



### Enabling Services: Reducing Barriers

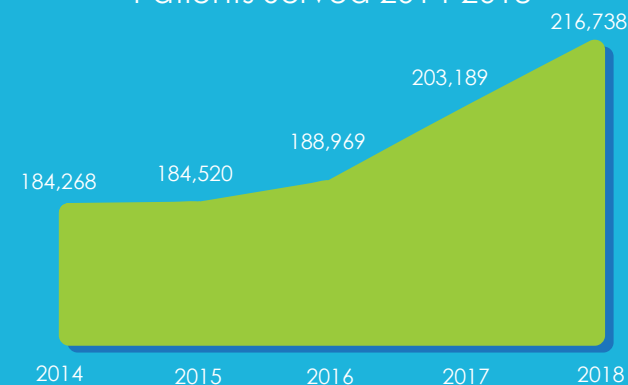
- Outreach
- Transportation
- Interpretation
- Housing
- Case Management
- Health Education
- Eligibility Assistance
- Food Insecurity

## OUR PATIENTS

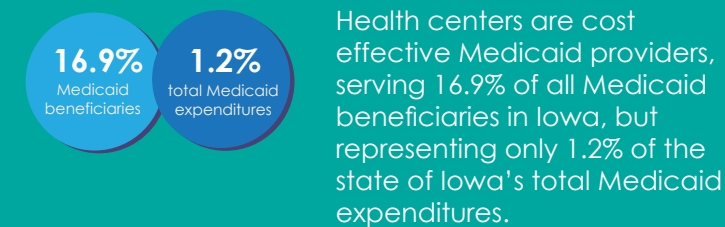
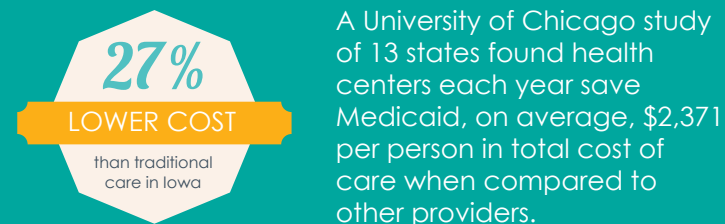
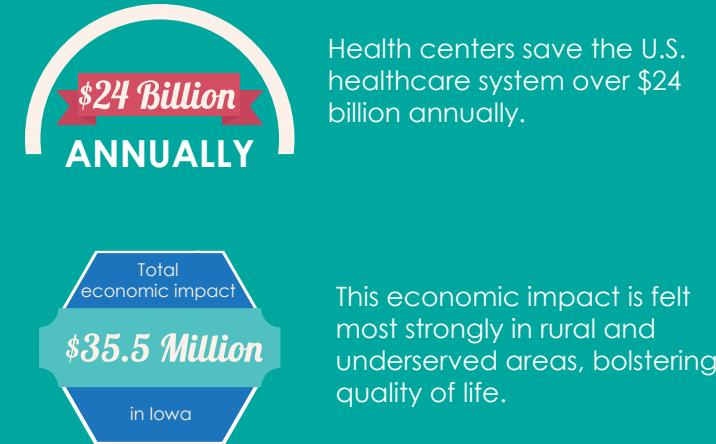


### PATIENT TRENDS

Patients Served 2014-2018



## ECONOMIC IMPACT



## QUALITY OUTCOMES

Iowa's health centers exceed our national peers in a variety of quality metrics including:



### BEHAVIORAL HEALTH TRENDS

Patients Served 2014-2018

